

Art Deco moves with the times

A new era has begun for a Yorkshire antiques business specialising in the glorious age of Art Deco.

Art Deco Originals, which is celebrating its 25th anniversary this year, has left Halifax Antiques Centre (which is now closed) and has embarked on a new and exciting chapter in its history.

The renowned and respected business, established and run by Bradford-born Art Deco collector and dealer Muir Hewitt, has moved to Redbrick Mill, in Bradford Road, Batley, the North's leading destination for home furnishings and interiors.

Art Deco Originals will be the perfect addition to the sympathetically restored Victorian textile mill.

Muir has amassed a wide selection of original 1920s' and 1930s' Art Deco furniture and decorative arts.

The move has given the 52-year-old an opportunity to showcase his beautiful and unique collection, which includes tableware and decorative ceramic items by the Pottery Ladies, Clarice Cliff, Susie Cooper and Charlotte Rhead.

Mirrors, wall plaques and lamps are available, as well as stunning examples of period furniture, much of it made using typical 1930s' exotic woods veneers rarely seen today, such as sycamore, bird's eye maple, walnut and even zebano.

"I am very excited about the move to Redbrick because I feel this will be a unique opportunity for customers –



Muir Hewitt: "Buying an antique means buying something unique."

existing and new – to come along and see for themselves what Art Deco Originals has to offer as well as having the chance to buy something original," Muir said.

"Buying an antique means buying something unique - once it's gone, it's gone."

"With Art Deco in particular you find that many modern day designs now feature these elements of shape and line, making mixing the old with the new a perfect combination.

"And more and more customers today

are aiming for this eclectic look when they are choosing items for the home."

Muir is looking forward to marking the move with a 1930s' evening planned for later in the year which will feature live jazz music of the era.

Muir said his passion for Art Deco, which started when he was a teenager, remained as strong as ever today.

He said: "This is a very special year for me – I am celebrating 25 years in the business – and the move is almost like a new beginning. I am just as excited above the move to Redbrick as when I first set up Art Deco Originals a quarter of a century ago."

The new space has allowed Muir to display his collection of Art Deco to its best, through a number of carefully-planned room settings, giving customers ideas of how the furniture would look in their homes.

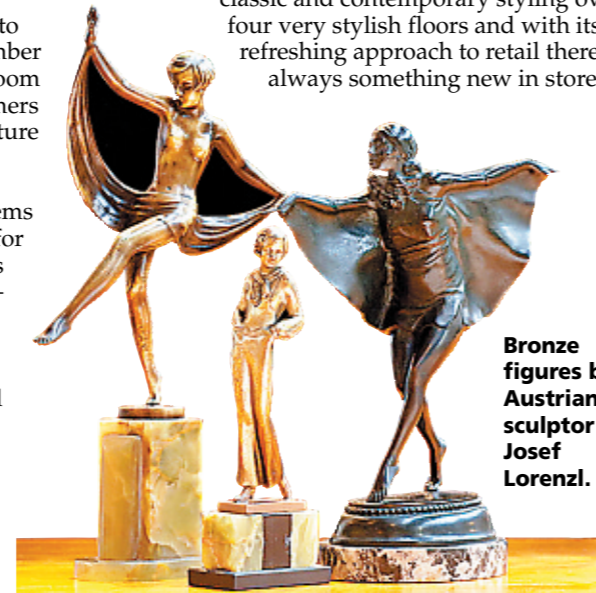
Muir sources only items of the highest quality for his business which has twice featured on TV – firstly, on the popular BBC2 *Flog It!* programme and, secondly, in a series all about the 1920s and 1930s, entitled *Art Deco Designs*, in which actress and Art Deco collector Maureen Lipman bought a three-piece

suite from Muir when she visited Art Deco Originals which now takes pride of place in her sitting room.

Nicola Orrell, Marketing Manager at Redbrick Mill, said she was delighted Art Deco Originals had moved into the complex.

She said: "Redbrick is an inspirational destination, home to over 25 cutting-edge brand names and independent retailers, including Heal's, Feather & Black, Sofa Workshop, Lombok, New Heights and BoConcept, BB Italia, Funktionalley, Smart Gallery, Ice Interiors, plus three fabulous cafés.

"All the Redbrick stores feature inspirational room sets with both classic and contemporary styling over four very stylish floors and with its refreshing approach to retail there's always something new in store."



Bronze figures by Austrian sculptor Josef Lorenzl.



Above: a general view of the showroom. Below left: the stunning Hillie Modernist dressing table, and below right: Clarice Cliff ceramics.

"At Redbrick we continually evolve our products, brands and also the complex itself.

"Covering all aspects of home furnishings, design accessories and gifts, there is a synergy between the products throughout the store to inspire you to furnish your home and experience your own individuality."

■ To contact Muir Hewitt: Telephone, 01924 458800, email, muirhewitt@hotmail.com, website, www.muirhewitt.com
 ■ Redbrick Mill, 218 Bradford Road, Batley, West Yorkshire. Telephone, 01924 458800. Open seven days Mondays-Fridays 9.30am-5.3 pm (Thursdays 9.30am-8pm), Saturdays 9am-6pm, Sundays 10.30am-5pm.



ADS TO SELL

ADS TO SELL

ADS TO SELL